

**Company Directive**  
**STANDARD TECHNIQUE : CAØU/2**  
**Relating to Procedures for Making**  
**LV Service Cable Cut-Out Terminations**

**Policy Summary**

This Standard Technique document contains all the approved LV Service Domestic and Street Lighting Cut-Out terminations for PVC Plain or Split Concentric cables. It shall be implemented in conjunction with the appropriate General Requirements in ST: CAØC.

This ST has not been written as a training document. It is not intended to be exhaustive in content and you must refer to your supervisor if you require training or instruction.

You shall work safely and skilfully, utilising the training/instruction you have already received, relating to the contents of this document and its cross-references.

You must make sure that you understand your job instructions and that you have the necessary tools and equipment for the job.

**Author:** Richard Summers

**Implementation Date:** July 2014

**Approved by**



**Policy Manager**

**Date:**

8 September 2014

*All references to Western Power Distribution or WPD must be read as National Grid Electricity Distribution or NGED*

**NOTE:** The current version of this document is stored in the NGED Corporate Information Database. Any other copy in electronic or printed format may be out of date. Copyright © 2022 National Grid Electricity Distribution

## **IMPLEMENTATION PLAN**

### **Introduction**

This Standard Technique has been updated to correct errors in the numbering of the General Requirements and include the use of solvent wipes.

### **Main Changes**

- General Requirement numbers amended
- Fire retardant boards included for all domestic cut-outs
- Solvent wipes included in the Standard Techniques

### **Impact of Changes**

All new domestic cut-outs should now be fitted with fire retardant back boards as described 7.401, 7.402, 7.403 and 7.404.

### **Implementation Actions**

Distribution Managers and Team Managers shall brief their teams on the contents of this policy to the relevant staff.

Word Processing to issue copies to paper manual holders (Midlands and South)

### **Implementation Timetable**

Immediate

Document Revision & Review Table		
Date	Comments	Author
July 2014	<ul style="list-style-type: none"> <li>• Correction of General Requirement Numbers.</li> <li>• Inclusion cable tie around phase insulation (cut-outs)</li> <li>• Added fire retardant boards for all domestic cut-outs</li> </ul>	Richard Summers

# **ST: CAØU/2 PROCEDURES FOR MAKING LV SERVICE CABLE TERMINATIONS**

## **INTRODUCTION**

This Standard Technique Document contains all the approved service cable terminations, which shall be implemented in conjunction with the appropriate General Requirements contained in ST: CAØC, including: -

1. General Cleanliness and Accident Prevention
2. General Jointing Procedures - Dead Cables
3. General Jointing Procedures and Safety Precautions - Live Cables

If the need arises to undertake a Service Termination (i.e. non-standard) not covered within this Standard Technique the Policy Manager, Head Office, is to be consulted.

<b>CONTENTS</b>	<b>Page</b>
7.401 PVC Plain Concentric Cut-Out Termination (Single Phase)	5
7.402 PVC Split Concentric Cut-Out Termination (Single Phase)	9
7.403 PVC Plain Concentric Cut-Out Termination (Three Phase)	13
7.404 PVC Split Concentric Cut-Out Termination (Three Phase)	17
7.405 PVC Plain Concentric Street Lighting Cut-Out Termination	22
7.406 PVC Split Concentric Street Lighting Cut-Out Termination	26
7.407 35mm <sup>2</sup> CNE Wavecon (Three Phase)	31

**Note: - Any reference to plain concentric equally applies to hybrid.  
The phase conductor insulation may be either XLPE or PVC.**

**ST: CAØU/2 PROCEDURES FOR MAKING SERVICE CABLE  
TERMINATIONS**

**JOINTING PROCEDURE 7.401**

**PVC PLAIN CONCENTRIC SERVICE CABLE  
100A CUT-OUT TERMINATION - SINGLE PHASE**

**This procedure is to be read in conjunction with the appropriate  
General Requirements ST: CAØC Section 6  
of the LV Service Cable Jointing Manual**

## **JOINTING PROCEDURE 7.401**

### **MATERIALS LIST**

**CABLE SIZES - 25/35mm<sup>2</sup> Hybrid or 16/25mm<sup>2</sup> Cu Plain Conc**

<b>Item</b>	<b>Quantity</b>
100A CNE 1ph cut-out	1
100A CNE 1ph cut-out cover	1

### **ADDITIONAL ITEMS FOR EACH TERMINATION**

Materials for crutch seal where required.

Seals

Sealing wire

**Note: - Individual material item numbers (SHOPS) are to be found in Section 4 of the LV Service Cable Jointing Manual.**

## JOINTING PROCEDURE 7.401

### Actions

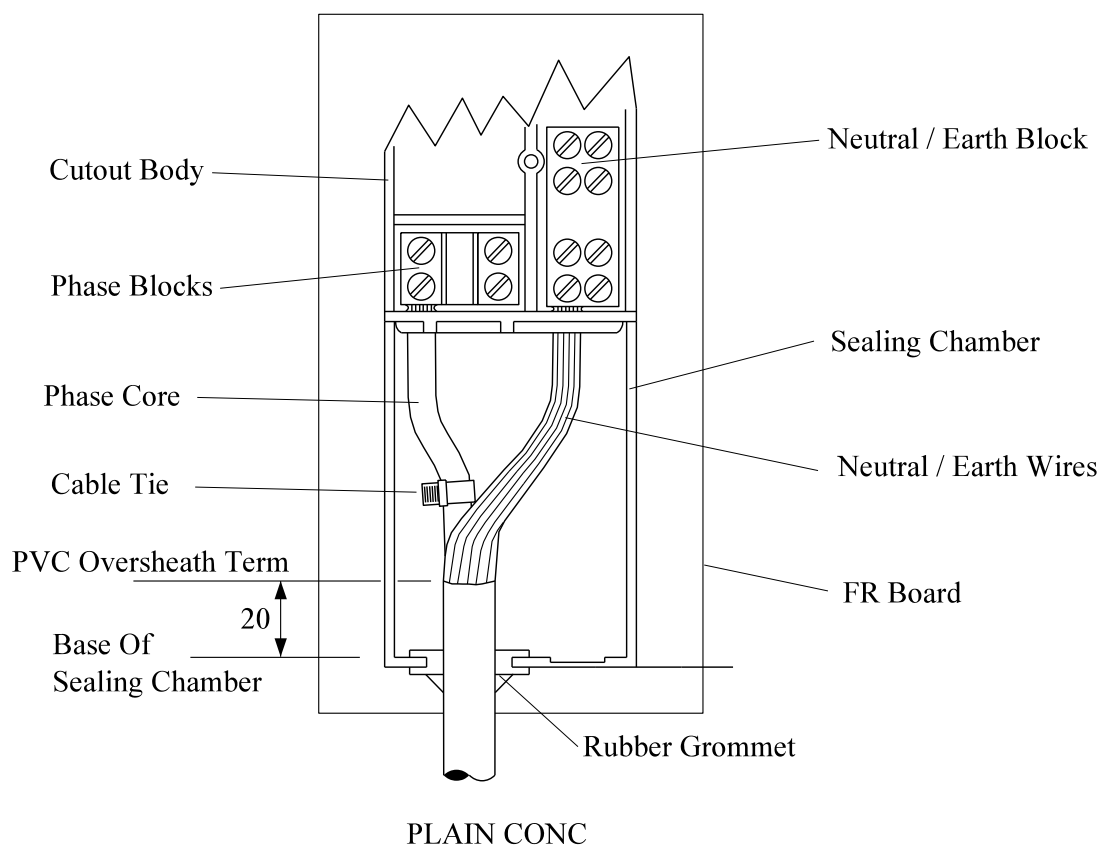
### General Requirements (ST: CAØC)


Refer to Drawing **SVJ 7.401.1** whilst undertaking this Jointing Procedure.

- |     |  |    |
|-----|--|----|
| 1.  | Open and cut cable in accordance with General Requirement  | 13 |
| 2.  | Prepare cut-out and fix to fire retardant board (fit PME link if appropriate) --   | -- |
| 3.  | Cut cable to length (100mm above top of cut-out)   | -- |
| 4.  | Fit rubber grommet to cable  | -- |
| 5.  | Mark position of oversheath termination and remove   | 5  |
| 6.  | Where the cut-out position is lower than the service cable route, a crutch seal may be applied if specified by the Supervisor. | 32 |
| 7.  | Form neutral/earth wires into a conductor  | 7  |
| 8.  | Set phase and neutral/earth conductors into position   | -- |
| 9.  | Make neutral/earth connection  | -- |
| 10. | Apply temporary shrouding to neutral/earth conductor and terminal block  | 17 |
| 11. | Cut phase conductor to length and remove insulation, depth of terminal barrel plus 5mm   | -- |
| 12. | Make phase connection and apply terminal block cover   | -- |
| 13. | Remove temporary shrouding applied in 10   | -- |
| 14. | Fit cable tie around phase insulation in the cable crutch  | -- |
| 15. | Fit cable cover and remaining cut-out covers   | -- |
| 16. | Apply phase identification, earthing and security labels   | -- |
| 17. | Check volts, polarity and earth loop impedance   | -- |
| 18. | Fit fuse carrier and seal  | -- |

All dimensions in mm

# Standard 100 Amp Single Phase Combined Neutral / Earth Cut - Out



1	RJB			09/14	CABLE TIE & FR BOARD ADDED		
Rev No	Drawn	Chk'd	App'd	Date	Revision		
ORIGINAL ISSUE		DATE		<div>WESTERN POWER DISTRIBUTION Design Department. Avonbank, Feeder Road, Bristol BS2 0TB Tel: 0117 933 2000      Fax: 0117 933 2001.</div> <div>WESTERN POWER DISTRIBUTION</div>			
Drawn	RJB	04/12					
Checked							
Approved							
SCALE		N.T.S.		Title		Drg. No.	Rev No
				PVC PLAIN CONC CUTOUT TERMINATION - SINGLE PHASE GENERAL LAYOUT		SVJ 7.401.1	1

ALL RIGHTS ARE RESERVED TO WPD (South West) plc. NO PART OF THIS DRAWING MAY BE REPRODUCED OR TRANSMITTED IN ANY FORM OR BY ANY MEANS, INCLUDING PHOTOCOPYING AND RECORDING, OR STORED IN A RETRIEVAL SYSTEM OF ANY NATURE, WITHOUT PERMISSION.

**ST: CAØU/2 PROCEDURES FOR MAKING SERVICE CABLE  
TERMINATIONS**

**JOINTING PROCEDURE 7.402**

**PVC SPLIT CONCENTRIC SERVICE CABLE  
100A CUT-OUT TERMINATION - SINGLE PHASE**

**This procedure is to be read in conjunction with the appropriate  
General Requirements ST: CAØC Section 6  
of the LV Service Cable Jointing Manual**

## **JOINTING PROCEDURE 7.402**

### **MATERIALS LIST**

#### **CABLE SIZES - 16/25mm<sup>2</sup> Cu Plain Conc**

<b>Item</b>	<b>Quantity</b>
100A SNE 1ph cut-out	1
100A SNE 1ph cut-out cover	1

#### **ADDITIONAL ITEMS FOR EACH TERMINATION**

Materials for crutch seal where required.

Seals

Sealing Wire

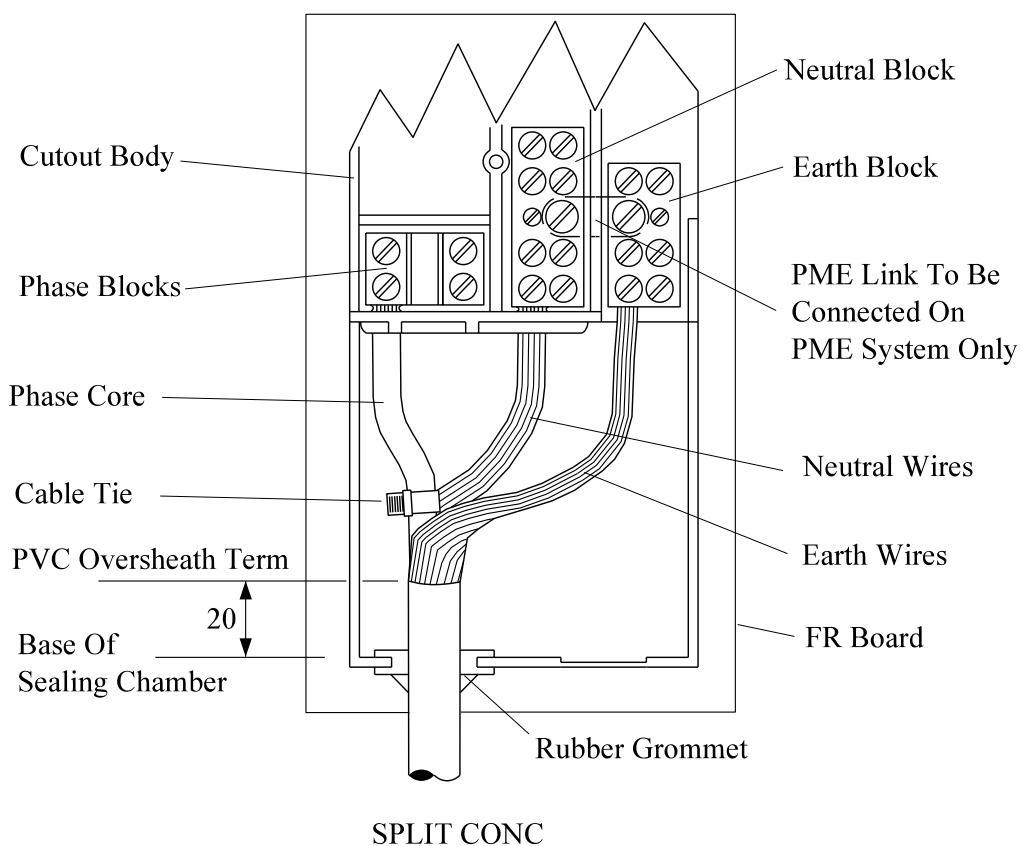
**Note: - Individual material item numbers (SHOPS) are to be found in Section 4 of the LV service Cable Jointing Manual.**


## JOINTING PROCEDURE 7.402

Actions	General Requirements (ST: CAØC)
Refer to Drawing <b>SVJ.402.1</b> whilst undertaking this Jointing Procedure	
1. Open and cut cable in accordance with General Requirement	13
2. Prepare cut-out and fix to fire retardant board (fit PME link if appropriate) --	--
3. Cut cable to length (100mm above top of cut-out)	--
4. Fit grommet to cable	--
5. Mark position of oversheath termination and remove	5
6. Where the cut-out position is lower than the service cable route, a crutch seal may be applied if specified by the Supervisor	32
7. Form neutral wires into a conductor	7
8. Form earth wires into a conductor	7
9. Set phase, neutral and earth conductors into position	--
10. Make neutral and earth connections	--
11. Apply temporary shrouding to neutral, earth conductors and terminal block	17
12. Cut phase conductor to length and remove insulation depth of terminal barrel plus 5mm	--
13. Make phase connection and apply terminal block cover	--
14. Remove temporary shrouding applied in 11	--
15. Fit cable tie around phase insulation in the cable crutch	--
16. Fit cable cover and remaining cut-out covers	--
17. Apply phase identification, earthing and security labels	--
18. Check volts, polarity and earth loop impedance	--
19. Fit fuse carrier and seal	--

All dimensions in mm

# Standard 100 Amp Single Phase Separate Neutral / Earth Cut - Out



1	RJB			09/14	CABLE TIE & FR BOARD ADDED		
Rev No	Drawn	Chk'd	App'd	Date	Revision		
ORIGINAL ISSUE		DATE		<div>WESTERN POWER DISTRIBUTION</div> <div>Design Department.</div> <div>Avonbank,Feeder Road,Bristol BS2 0TB</div> <div>Tel:0117 933 2000 Fax:0117 933 2001.</div> <div><div>WESTERN POWER DISTRIBUTION</div><div></div></div>			
Drawn	RJB	04/12					
Checked							
Approved							
SCALE		N.T.S.		Title		Rev No	
				PVC SPLIT CONC		Drg. No.	
				CUTOUT TERMINATION			
				- SINGLE PHASE GENERAL LAYOUT		SVJ 7.402.1	
						1	

ALL RIGHTS ARE RESERVED TO WPD (South West) plc. NO PART OF THIS DRAWING MAY BE REPRODUCED OR TRANSMITTED IN ANY FORM OR BY ANY MEANS, INCLUDING PHOTOCOPYING AND RECORDING, OR STORED IN A RETRIEVAL SYSTEM OF ANY NATURE, WITHOUT PERMISSION.

**ST: CAØU/2 PROCEDURES FOR MAKING SERVICE CABLE  
TERMINATIONS**

**JOINTING PROCEDURE 7.403**

**PVC PLAIN CONCENTRIC SERVICE CABLE  
100A CUT-OUT TERMINATION - THREE PHASE**

**This procedure is to be read in conjunction with the appropriate  
General Requirements ST: CAØC Section 6  
of the LV Service Cable Jointing Manual**

## **JOINTING PROCEDURE 7.403**

### **MATERIALS LIST**

**CABLE SIZES - 25/35mm<sup>2</sup> Hybrid or 16/25mm<sup>2</sup> Cu Plain Conc**

<b>Item</b>	<b>Quantity</b>
100A CNE 1ph cut-out	1
100A single pole cut-out	2
100A CNE 3ph cut-out cover	1

### **ADDITIONAL ITEMS FOR EACH TERMINATION**

Materials for crutch seal where required.

Seals

Sealing wire

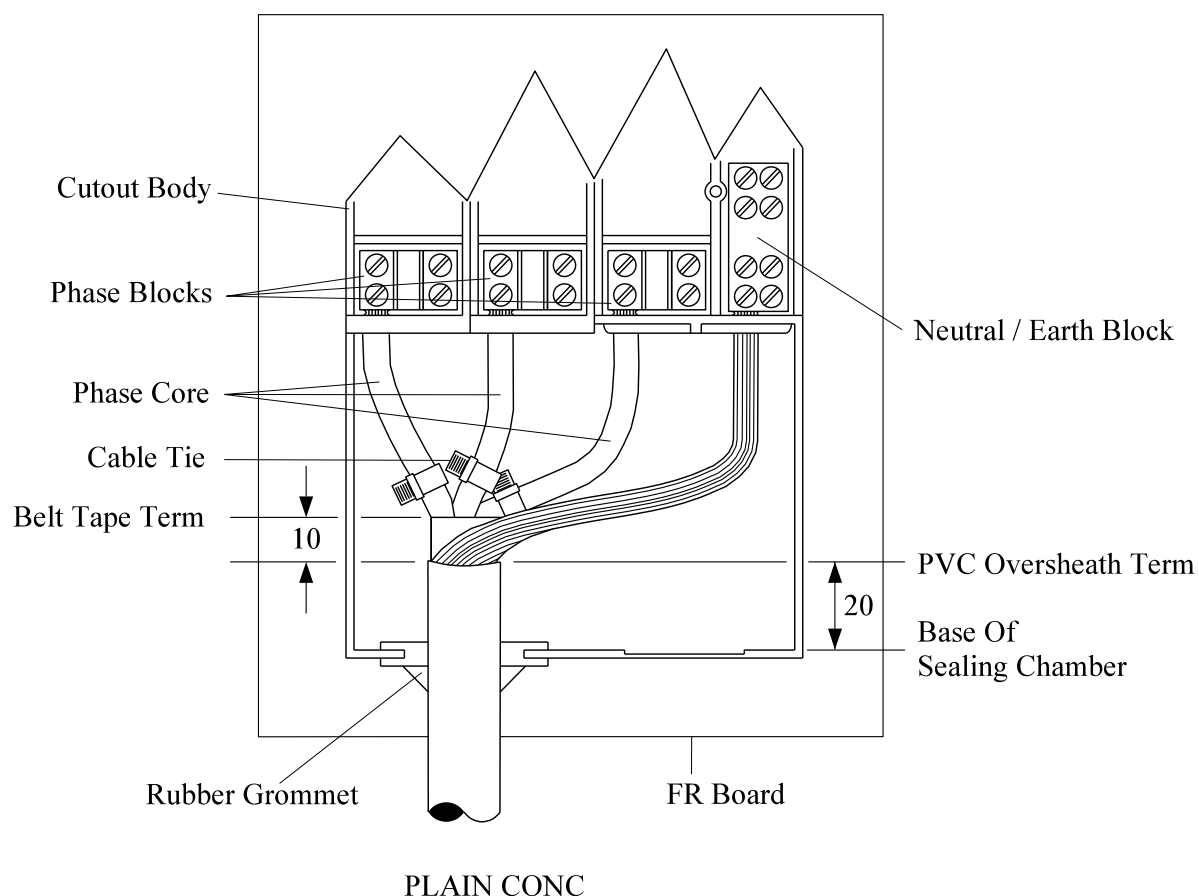
**Note: - Individual material item numbers (SHOPS) are to be found in Section 4 of the LV Service Cable Jointing Manual.**


## JOINTING PROCEDURE 7.403

Actions	General Requirements (ST: CAØC)
Refer to Drawing <b>SVJ 7.403.1</b> whilst undertaking this Jointing Procedure	
1. Open and cut cable in accordance with General Requirement	13
2. Prepare cut-out and fix to fire retardant board (fit PME link if appropriate) --	--
3. Cut cable to length (100mm above top of cut-out)	--
4. Fit grommet to cable	--
5. Mark position of oversheath termination and remove	5
6. Where the cut-out position is lower than the service cable route, a crutch seal may be applied if specified by the Supervisor	32
7. Form neutral/earth wires into a conductor	7
8. Set phase and neutral/earth conductors into position	--
9. Make connection neutral/earth	--
10. Apply temporary shrouding to neutral/earth conductor and terminal block	17
11. Cut L3 phase conductor to length and remove insulation, depth of barrel plus 5mm	--
12. Make L3 phase connection and apply terminal block covers	--
13. Repeat actions 11 & 12 for L2 & L1 in turn	--
14. Remove temporary shrouding applied in 10	--
15. Fit cable tie around phase insulation in the cable crutch	--
16. Fit cable cover and remaining cut-out covers	--
17. Apply phase identification, earthing and security labels	--
18. Check volts, polarity, phase rotation and earth loop impedance	--
19. Fit fuse carriers and seal	

All dimensions in mm

# Standard 100 Amp Three Phase Combined Neutral / Earth Cut - Out



1	RJB			09/14	CABLE TIE & FR BOARD ADDED		
Rev No	Drawn	Chk'd	App'd	Date	Revision		
ORIGINAL ISSUE		DATE		<div>WESTERN POWER DISTRIBUTION</div> <div>Design Department.</div> <div>Avonbank, Feeder Road, Bristol BS2 0TB</div> <div>Tel: 0117 933 2000 Fax: 0117 933 2001.</div> <div></div> <div>WESTERN POWER DISTRIBUTION</div>			
Drawn	RJB	04/12					
Checked							
Approved							
SCALE		N.T.S.		Title		Drg. No.	Rev No
				PVC PLAIN CONC			
				CUTOUT TERMINATION			
				- THREE PHASE GENERAL LAYOUT		SVJ 7.403.1	1

ALL RIGHTS ARE RESERVED TO WPD (South West) plc. NO PART OF THIS DRAWING MAY BE REPRODUCED OR TRANSMITTED IN ANY FORM OR BY ANY MEANS, INCLUDING PHOTOCOPYING AND RECORDING, OR STORED IN A RETRIEVAL SYSTEM OF ANY NATURE, WITHOUT PERMISSION.

**ST: CAØU/2 PROCEDURES FOR MAKING SERVICE CABLE  
TERMINATIONS**

**JOINTING PROCEDURE 7.404**

**PVC SPLIT CONCENTRIC SERVICE CABLE  
100A CUT-OUT TERMINATION - THREE PHASE**

**This procedure is to be read in conjunction with the appropriate  
General Requirements ST: CAØC Section 6  
of the LV Service Cable Jointing Manual**

## **JOINTING PROCEDURE 7.404**

### **MATERIALS LIST**

#### **CABLE SIZES - 25mm<sup>2</sup> Cu Plain Conc**

<b>Item</b>	<b>Quantity</b>
100A SNE 1ph cut-out	1
100A single pole cut-out	2
100A SNE 3ph cut-out cover	1

#### **ADDITIONAL ITEMS FOR EACH TERMINATION**

Materials for crutch seal where required

Seals

Sealing wire

**Note: - Individual material item numbers (SHOPS) are to be found in Section 4 of the LV Service Cable Jointing Manual.**

## JOINTING PROCEDURE 7.404

### Actions

### General Requirements (ST: CAØC)

Refer to Drawing **SVJ 7.404.1** whilst undertaking this Jointing Procedure

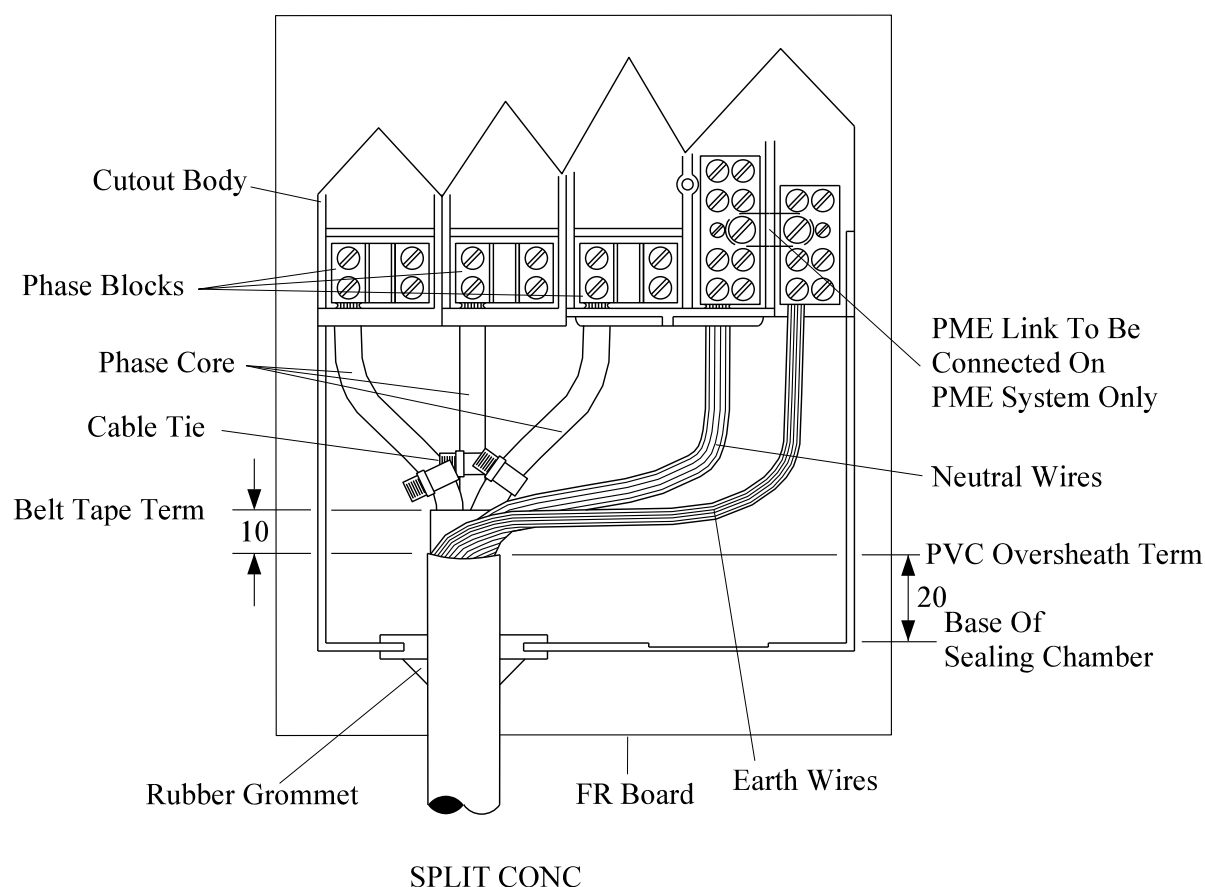
- |     |   |    |
|-----|---|----|
| 1.  | Open and cut cable in accordance with General Requirement   | 13 |
| 2.  | Prepare cut-out and fix to fire retardant board (fit PME link if appropriate) --  | -- |
| 3.  | Cut cable to length (100mm above top of cut-out)  | -- |
| 4.  | Fit grommet to cable  | -- |
| 5.  | Mark position of oversheath termination and remove  | 5  |
| 6.  | Where the cut-out position is lower than the service cable route, a crutch seal may be applied if specified by the Supervisor | 32 |
| 7.  | Form neutral wires into a conductor   | 7  |
| 8.  | Form earth wires into a conductor   | 7  |
| 9.  | Set phase, neutral and earth conductors into position   | -- |
| 10. | Make neutral and earth connections  | -- |
| 11. | Apply temporary shrouding to neutral, earth conductors and terminal blocks  | 17 |
| 12. | Cut L3 phase conductor to length and remove insulation, depth of barrel plus 5mm  | -- |
| 13. | Make L3 phase connection and apply terminal block cover   | -- |
| 14. | Repeat action 11 & 12 for L2 and L1 in turn   | -- |
| 15. | Remove temporary shrouding applied in 11  | -- |
| 16. | Fit cable tie around phase insulation in the cable crutch   | -- |
| 17. | Fit cable cover and remaining cut-out covers  | -- |


### **JOINTING PROCEDURE 7.404 - Continued**

- |     |  |    |
|-----|--|----|
| 18. | Apply phase identification, earthing and security labels       | -- |
| 19. | Check volts, polarity, phase rotation and earth loop impedance | -- |
| 20. | Fit fuse carriers and seal                                     | -- |

All dimensions in mm

# Standard 100 Amp Three Phase Separate Neutral / Earth Cut - Out



1	RJB			09/14	CABLE TIE & FR BOARD ADDED		
Rev No	Drawn	Chk'd	App'd	Date	Revision		
ORIGINAL ISSUE		DATE		<div>WESTERN POWER DISTRIBUTION</div> <div>Design Department.</div> <div>Avonbank,Feeder Road,Bristol BS2 0TB</div> <div>Tel:0117 933 2000 Fax:0117 933 2001.</div> <div>WESTERN POWER DISTRIBUTION</div>			
Drawn	RJB	04/12					
Checked							
Approved							
SCALE		N.T.S.		Title		Drg. No.	Rev No
				PVC SPLIT CONC			
				CUTOUT TERMINATION			
				- THREE PHASE GENERAL LAYOUT		SVJ 7.404.1	1

ALL RIGHTS ARE RESERVED TO WPD (South West) plc. NO PART OF THIS DRAWING MAY BE REPRODUCED OR TRANSMITTED IN ANY FORM OR BY ANY MEANS, INCLUDING PHOTOCOPYING AND RECORDING, OR STORED IN A RETRIEVAL SYSTEM OF ANY NATURE, WITHOUT PERMISSION.

**ST: CAØU/2 PROCEDURES FOR MAKING SERVICE CABLE  
TERMINATIONS**

**JOINTING PROCEDURE 7.405**

**PVC PLAIN CONCENTRIC SERVICE CABLE  
25A CUT-OUT TERMINATION - SINGLE PHASE**

**This procedure is to be read in conjunction with the appropriate  
General Requirements ST: CAØC Section 6  
of the LV Service Cable Jointing Manual**

© Western Power Distribution plc Produced All Rights Reserved 2014

## **JOINTING PROCEDURE 7.405**

### **MATERIALS LIST**

**CABLE SIZES - 25mm<sup>2</sup> Hybrid or 4/16mm<sup>2</sup> Cu Plain Conc**

<b>Item</b>	<b>Quantity</b>
-------------	-----------------

25A CNE PL cut-out	1
--------------------	---

### **ADDITIONAL ITEMS FOR EACH TERMINATION**

Seals

Sealing wire

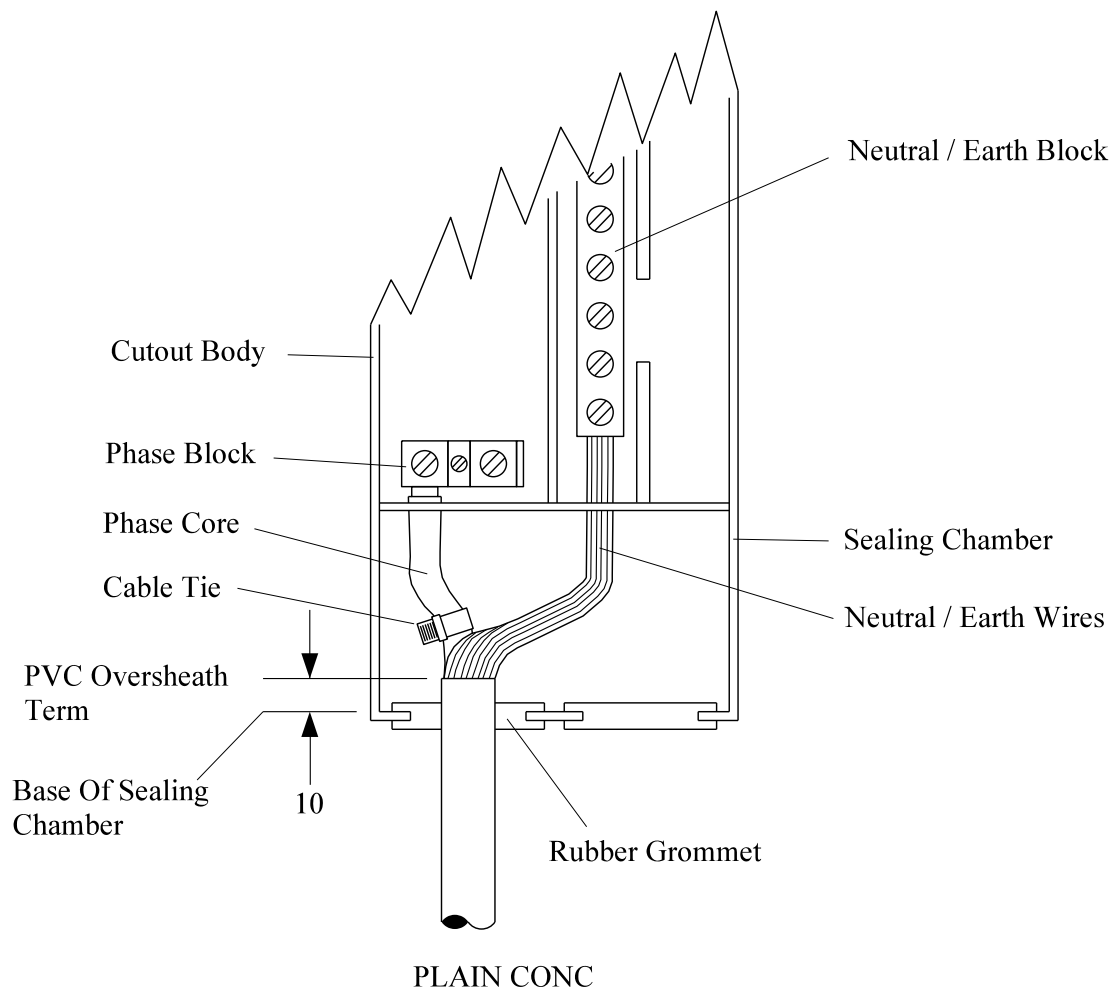
**Note: - Individual material item numbers (SHOPS) are to be found in Section 4 of the LV Service Cable Jointing Manual.**

## JOINTING PROCEDURE 7.405

Actions	General Requirements (ST: CAØC)
Refer to Drawing <b>SVJ 7.405.1</b> whilst undertaking this Jointing Procedure	
1. Apply shrouding around the column from ground level to 300mm minimum beyond top of entry hole	--
2. Open and cut cable in accordance with General Requirement	13
3. Prepare cut-out (fit PME link if appropriate)	--
4. Cut cable to length (100mm above top of cut-out)	--
5. Fit grommet to cable	--
6. Mark position of oversheath termination and remove	5
<b>Note:</b> - A minimum distance of 150mm cable length must be available from the column entrance to the cut-out base	
7. Form neutral/earth wires into conductor	7
8. Set phase and neutral/earth conductors into position	--
9. Make neutral/earth connection	--
10. Apply temporary shrouding to neutral/earth conductor and terminal block	17
11. Cut phase conductor to length and remove insulation, depth of terminal barrel plus 5mm	--
12. Make phase connection and apply terminal block cover	--
13. Remove temporary shrouding applied in 10	--
14. Fit cable tie around phase insulation in the cable crutch	--
15. Fix cut-out to backboard, fit cable cover and remaining cut-out covers	--
16. Apply phase identification, earthing and security labels	--
17. Check volts, polarity and earth loop impedance	--
18. Fit fuse carrier and seal	--

All dimensions in mm

## Standard 25 Amp Public Lighting Single Phase Combined Neutral / Earth Cut - Out



1	RJB			09/14	CABLE TIE ADDED
Rev No	Drawn	Chk'd	App'd	Date	Revision
ORIGINAL ISSUE					
Drawn	RJB	04/12			
Checked					
Approved					
SCALE	N.T.S.				
				<b>WESTERN POWER DISTRIBUTION</b> Design Department. Avonbank, Feeder Road, Bristol BS2 0TB Tel: 0117 933 2000 Fax: 0117 933 2001.	
				Title <b>PVC PLAIN CONC            (PUBLIC LIGHTING) CUTOUT TERMINATION            - SINGLE PHASE GENERAL LAYOUT</b>	<b>WESTERN POWER DISTRIBUTION</b> Drg. No. <b>SVJ 7.405.1</b>
					Rev No <b>1</b>

ALL RIGHTS ARE RESERVED TO WPD (South West) plc. NO PART OF THIS DRAWING MAY BE REPRODUCED OR TRANSMITTED IN ANY FORM OR BY ANY MEANS, INCLUDING PHOTOCOPYING AND RECORDING, OR STORED IN A RETRIEVAL SYSTEM OF ANY NATURE, WITHOUT PERMISSION.

**ST: CAØU/2 PROCEDURES FOR MAKING SERVICE CABLE  
TERMINATIONS**

**JOINTING PROCEDURE 7.406**

**PVC SPLIT CONCENTRIC SERVICE CABLE  
25A CUT-OUT TERMINATION - SINGLE PHASE**

**This procedure is to be read in conjunction with the appropriate  
General Requirements ST: CAØC Section 6  
of the LV Service Cable Jointing Manual**

## **JOINTING PROCEDURE 7.406**

### **MATERIALS LIST**

#### **CABLE SIZES - 4/16mm<sup>2</sup> Cu Split Conc**

<b>Item</b>	<b>Quantity</b>
25A SNE PL cut-out	1

#### **ADDITIONAL ITEMS FOR EACH TERMINATION**

Seal  
Sealing wire

**Note: - Individual material item numbers (SHOPS) are to be found in Section 4 of the LV Service Cable Jointing Manual.**

## JOINTING PROCEDURE 7.406

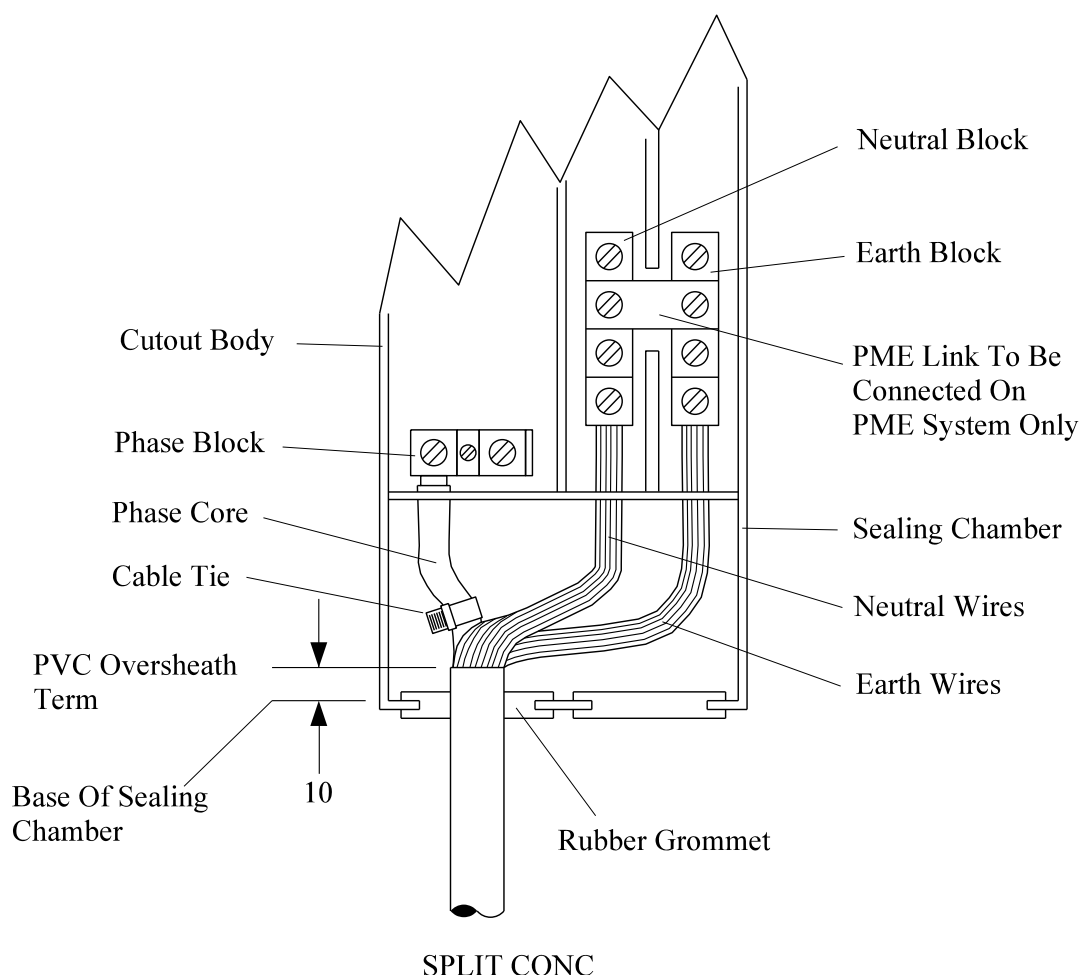
Actions	General Requirements (ST: CAØC)
Refer to Drawing <b>SVJ 7.406.1</b> whilst undertaking this Jointing Procedure	
1. Apply shrouding around the column from ground level to 300mm minimum beyond top of entry hole	--
2. Open and cut cable in accordance with General Requirement	13
3. Prepare cut-out (fit PME link if appropriate)	--
4. Cut cable to length (100mm above top of cut-out)	--
5. Fit grommet to cable	--
6. Mark position of oversheath termination and remove	5
<b>Note:</b> - A minimum distance of 150mm cable length must be available from the column entrance to the cut-out base sealing chamber	
7. Form neutral wires into a conductor	7
8. Form earth wires into a conductor	7
9. Set phase, neutral and earth conductors into position	--
10. Make neutral and earth connections	--
11. Apply temporary shrouding to neutral, earth conductors and terminal block	17
12. Cut phase conductor to length and remove insulation depth of terminal barrel plus 5mm	--
13. Make phase connection and apply terminal block cover	--
14. Remove temporary shrouding applied in 11	--
15. Fit cable tie around phase insulation in the cable crutch	--
16. Fit cut-out to backboard, fit cable cover and remaining cut-out covers	--


### **JOINTING PROCEDURE 7.406 - Continued**

- |     |  |    |
|-----|--|----|
| 17. | Apply phase identification, earthing and security labels | -- |
| 18. | Check volts, polarity and earth loop impedance           | -- |
| 19. | Fit fuse carrier and seal                                | -- |

All dimensions in mm

# Standard 25 Amp Public Lighting Single Phase Separate Neutral / Earth Cut - Out



1	RJB			09/14	CABLE TIE ADDED		
Rev No	Drawn	Chk'd	App'd	Date	Revision		
ORIGINAL ISSUE		DATE		WESTERN POWER DISTRIBUTION Design Department. Avonbank,Feeder Road,Bristol BS2 0TB Tel:0117 933 2000 Fax:0117 933 2001.		 <b>WESTERN POWER DISTRIBUTION</b>	
Drawn	RJB	04/12					
Checked				Title PVC SPLIT CONC CUTOUT (PUBLIC LIGHTING) TERMINATION - SINGLE PHASE GENERAL LAYOUT		Drg. No. SVJ 7.406.1	
Approved							
SCALE		N.T.S.				Rev No 1	

ALL RIGHTS ARE RESERVED TO WPD (South West) plc. NO PART OF THIS DRAWING MAY BE REPRODUCED OR TRANSMITTED IN ANY FORM OR BY ANY MEANS, INCLUDING PHOTOCOPYING AND RECORDING, OR STORED IN A RETRIEVAL SYSTEM OF ANY NATURE, WITHOUT PERMISSION.

## **ST: CAØU/2 PROCEDURES FOR MAKING SERVICE CABLE TERMINATIONS**

### **JOINTING PROCEDURE 7.407**

#### **35mm<sup>2</sup> WAVECON SERVICE CABLE 100A CUT-OUT TERMINATION - THREE PHASE**

**This procedure is to be read in conjunction with the appropriate  
General Requirements ST: CAØC Section 6  
of the LV Service Cable Jointing Manual**

## **JOINTING PROCEDURE 7.407**

### **MATERIALS LIST**

#### **CABLE SIZES - 35mm<sup>2</sup> Wavecon**

<b>Item</b>	<b>Quantity</b>
100A CNE 1ph cut-out	1
100A single pole cut-out	2
100A CNE 3ph cut-out cover	1

### **ADDITIONAL ITEMS FOR EACH TERMINATION**

Materials for crutch seal where required.

Seals

Sealing wire

**Note: - Individual material item numbers (SHOPS) are to be found in Section 4 of the LV Service Cable Jointing Manual.**

## JOINTING PROCEDURE 7.407

### Actions

### General Requirements (ST: CAØC)

Refer to Drawing **SVJ 7.407.1** whilst undertaking this Jointing Procedure

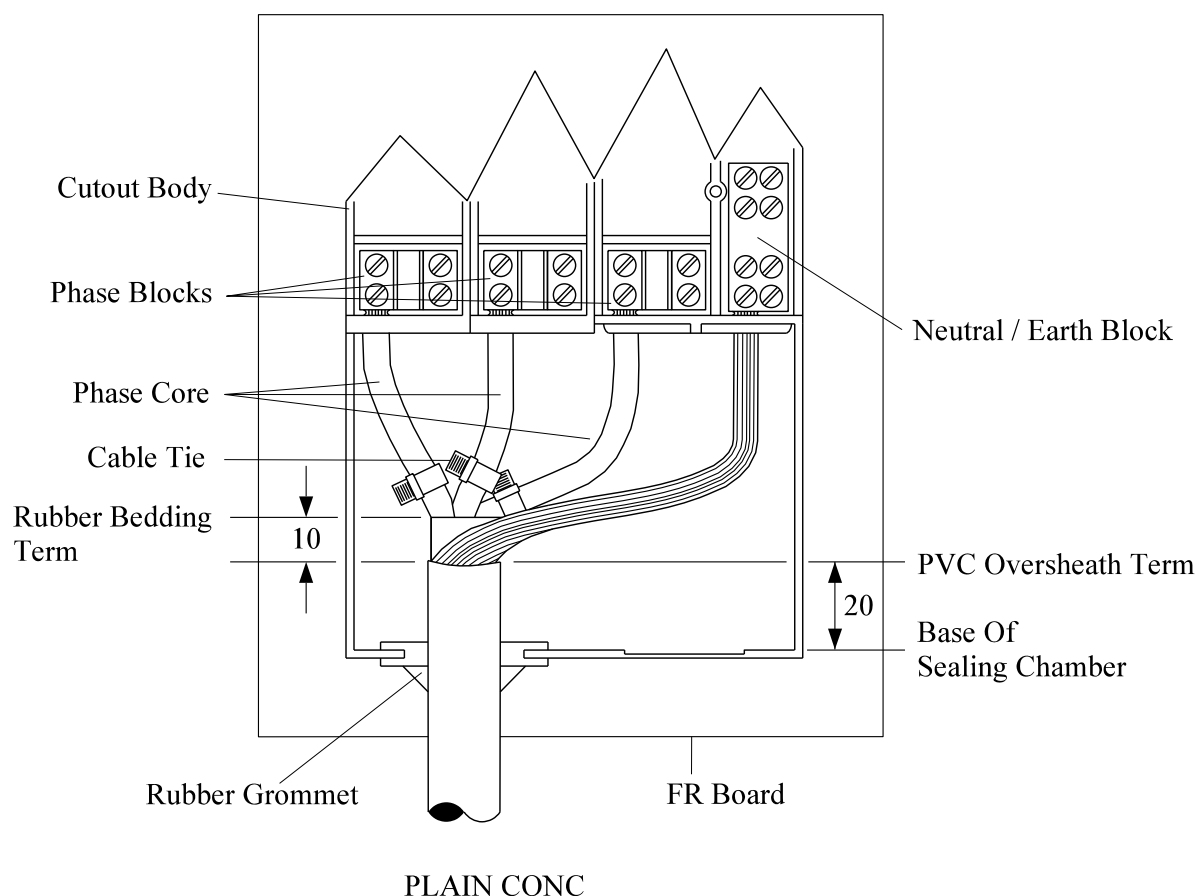
1.	Open and cut cable in accordance with General Requirement 6.14	14
2.	Prepare cut-out and fix to fire retardant board (fit PME link if appropriate) --	
3.	Cut cable to length (100mm above top of cut-out)	--
4.	Fit grommet to cable	--
5.	Mark position of oversheath termination and remove	5
6.	Form neutral/earth wires into a conductor	7
7.	Remove rubber bedding	8
8.	Where the cut-out position is lower than the service cable route, a crutch seal may be applied if specified by the Supervisor	32
9.	Set phase and neutral/earth conductors into position	--
10.	Make neutral/earth connection	--
11.	Apply temporary shrouding to neutral/earth conductor and terminal block	17
12.	Cut L3 phase conductor to length and remove insulation, depth of barrel plus 5mm	--
13.	Make L3 phase connection and apply terminal block covers	--
14.	Repeat actions 11 & 12 for L2 & L1 in turn	--
15.	Remove temporary shrouding applied in 10	--
16.	Fit cable tie around phase insulation in the cable crutch	--
17.	Fit cable cover and remaining cut-out covers	--
18.	Apply phase identification, earthing and security labels	--

## **JOINTING PROCEDURE 7.407 - Continued**

<b>Actions</b>	<b>General Requirements (ST: CAØC)</b>
19. Check volts, polarity, phase rotation and earth loop impedance	--
20. Fit fuse carriers and seal	--

All dimensions in mm

# Standard 100 Amp Three Phase Combined Neutral / Earth Cut - Out



1	RJB			09/14	CABLE TIE & FR BOARD ADDED		
Rev No	Drawn	Chk'd	App'd	Date	Revision		
ORIGINAL ISSUE		DATE		<div>WESTERN POWER DISTRIBUTION</div> <div>Design Department.</div> <div>Avonbank, Feeder Road, Bristol BS2 0TB</div> <div>Tel: 0117 933 2000 Fax: 0117 933 2001.</div> <div><div>WESTERN POWER DISTRIBUTION</div><div></div></div>			
Drawn	RJB	04/12					
Checked							
Approved							
SCALE		N.T.S.		Title		Drg. No.	Rev No
				35mm <sup>2</sup> CNE WAVECON CUTOUT TERMINATION - THREE PHASE GENERAL LAYOUT		SVJ 7.407.1	1

ALL RIGHTS ARE RESERVED TO WPD (South West) plc. NO PART OF THIS DRAWING MAY BE REPRODUCED OR TRANSMITTED IN ANY FORM OR BY ANY MEANS, INCLUDING PHOTOCOPYING AND RECORDING, OR STORED IN A RETRIEVAL SYSTEM OF ANY NATURE, WITHOUT PERMISSION.

## **APPENDIX A**

### **SUPERSEDED DOCUMENTATION**

This Standard Technique supersedes ST:CAØU/1 dated May 2012 which should now be withdrawn.

## **APPENDIX B**

### **ASSOCIATED DOCUMENTATION**

ST:CAØA, ST:CAØB, ST:CAØC, ST:CAØM, ST:CAØN, ST:CAØS, ST:CAØT, ST:CAØV, ST:CAØW, ST:CAØZ.

## **APPENDIX C**

### **IMPACT ON COMPANY POLICY**

None, as this document has just been updated to incorporate all the latest SHOPS numbers and other subtle minor changes.

## **APPENDIX D**

### **IMPLEMENTATION OF POLICY**

This Standard Technique shall be communicated to all relevant WPD engineers and site staff at the next Team Briefing by the Team Manager.

## **APPENDIX E**

### **KEY WORDS**

Service Termination, Cutout, House Service Cutout, Public Lighting Cutout.