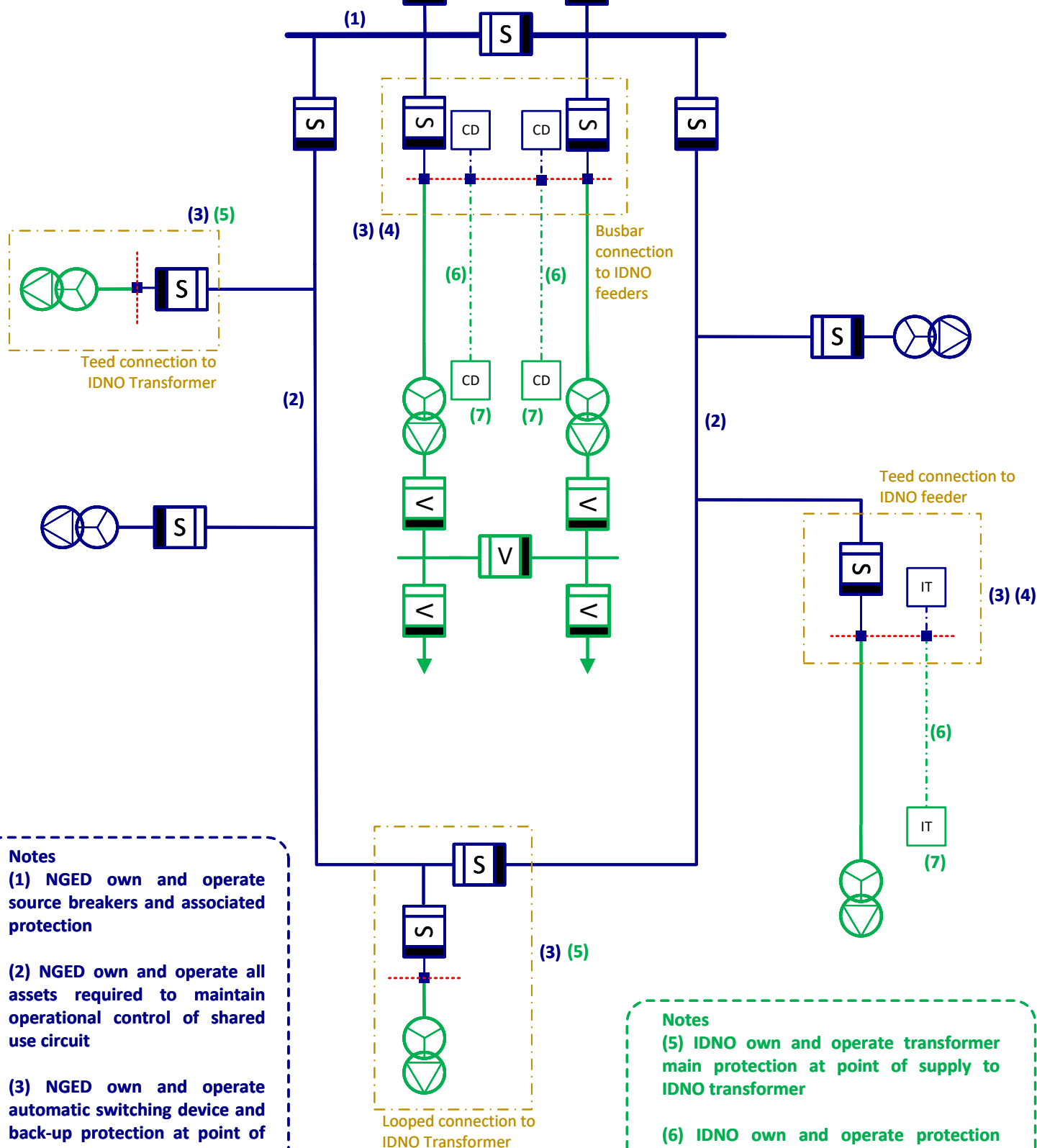


### ***Simplified circuit and protection arrangements***



## Notes

**(1) NGED own and operate source breakers and associated protection**

**(2) NGED own and operate all assets required to maintain operational control of shared use circuit**

**(3) NGED own and operate automatic switching device and back-up protection at point of supply to IDNO**

**(4) NGED own and operate feeder main protection relay and/or intertripping relay at point of supply to IDNO feeder**

## Notes

**(5) IDNO own and operate transformer main protection at point of supply to IDNO transformer**

(6) IDNO own and operate protection and/or intertripping telecom link associated with IDNO feeder

**(7) IDNO own and operate feeder main protection relay and/or intertripping relay at remote end(s) of IDNO feeder**